



For maximum performance and controlled procedures

SCE IVF

Semi Closed
Environment for IVF



Designed in Denmark



Made in the E.U.

SCE IVF

Semi Closed
Environment for IVF

Designed to provide maximum performance and controlled environment for your IVF procedures.

Built-in Microscope

Digital inverted microscope (Zeiss objective) that can move seamlessly from low to high magnification. The microscope is controllable by a joystick to adjust the focus and magnification.



SCE IVF: Zeiss objectives of 1x, 5x and 20x..

Built-in Incubators

Market's only semi closed workstation with two (2) built-in incubators, that can be accessed from both inside and outside the SCE.

Temperature-Controlled Work Zones

1 set point, 8 independent zones with their own heating elements and sensors, which allow for excellent uniformity.

- **Accuracy:** $\pm 0.2^{\circ}\text{C}$
- **Uniformity:** $\pm 0.2^{\circ}\text{C}$

Temperature range: $25\text{--}40^{\circ}\text{C}$



About Esco Medical

Esco Medical is one of the divisions of the Esco Group of companies, which targets innovative technological solutions for fertility clinics and laboratories. Esco Medical is the leading manufacturer and innovator of high quality IVF equipment that are designed in Denmark and mostly made in the EU.

As embryos are sensitive to temperature and pH fluctuations, we designed the Semi Closed Environment (SCE) IVF to provide a controlled and natural environment during gamete/embryo handling —stress-free screening of oocyte during retrieval and fertilization, cleavage checking of embryos, scoring and preparation of embryo for transfer, and dish/media change.



Touchscreen Monitor

The touchscreen monitor is a fully functional Windows PC with exceptional features:

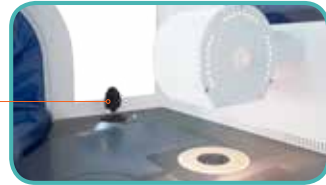
- Observe and record culture behavior in real-time via built-in microscope camera function.
- Provides real-time information of the zone performance and other work area parameters such as gas pressure and flow rate.

Heated Glass Stage

The heated glass stage has a dedicated and uninterrupted power supply to further enhance the temperature control and recovery in this zone.

Joystick Control

Easily adjust the focus and magnification with the joystick.



Arm Sleeves

Made of soft, durable and embryo-safe material that seamlessly allows easy movement of the hands within the work area.

“Maximum performance and Quality Control of your procedures”



Optimal Solutions for Better IVF Workflow

Comfort and Ergonomics

- The SCE-IVF is ergonomically designed to minimize operator strain while working.
- The SCE-IVF has an armrest support for more comfortable working position.

Arm Sleeves and Side Hatch

- Arm sleeves easily and comfortably fit into your arms for convenience while working with your samples.
- Easy cleaning of the work area and loading of materials by unzipping the arm sleeves or opening the side hatch.

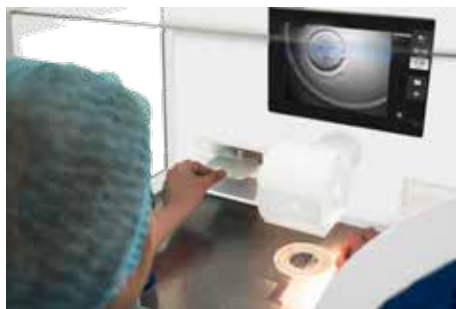


Built-in Mini Incubators

- The market's only semi-closed workstation that has built-in incubators to secure your samples when you open the side hatch or cuffs.
- The built-in incubator has a CO₂ and temperature-controlled environment for immediate/temporary storing of your samples.

- The incubators have an opening both inside and outside the SCE. You can load your samples at the back and access it from the inside.

Gas Recovery Time: less than 1 min
Temperature Recovery: less than 3 mins

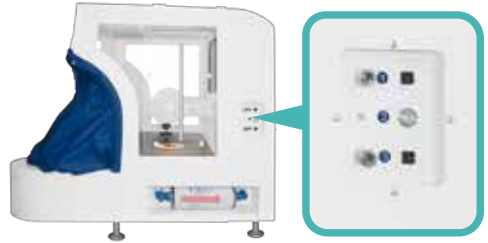


“Hand in hand to provide only the best in embryo incubation”

Quality Control Features

Easy validation of chamber parameters

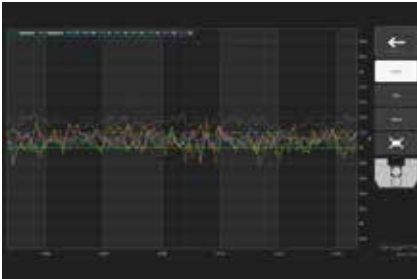
PT1000 temperature sensors are built-in, which are completely independent from the main circuitry. Gas sampling ports are available for the two (2) built-in incubators.



High quality airstream via HEPA-VOC filter

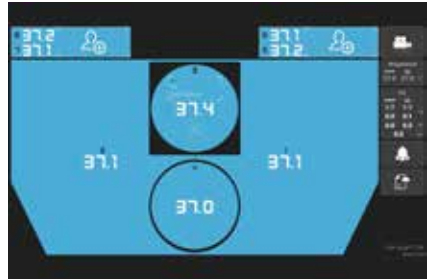
The gas that goes thru the incubators and the main work area of the SCE IVF is filtered by a built-in HEPA-VOC filter, which effectively removes at least 99.995% of all airborne particulates larger than 0.3 μm .

The gas is also recirculated through the HEPA-VOC filtration system to help lower your consumption.



Data-logging System

- All performance data of the machine including viewed in graphs.
- The datalogging report can be viewed in an hourly, daily or weekly-basis, which makes it more convenient for the user.



Surveillance System

- It provides the user real-time information of zone performance and other work area parameters such as gas pressure and flow rate.



Sophisticated Software



Powerful tools to complement your needs

- You can **View**, **Record** and **Export** images and videos of your sample for retrospective analysis.
- Measure the radius or diameter of the cell with the very easy to use *Measurement Tool*.



And more advanced tools

- Easily record patient information for more convenient tagging of recorded data.
- Adjust brightness, contrast and magnification that will fit your preference.



Accessories

Heating Optimization Plates

Each incubator compartment can be loaded with a Heating Optimization Plate to facilitate heat transfer directly to the culture dishes. It is equipped with bar handles on both sides for easy gripping.

Choices:

- Nunc™
- Falcon™
- Vitrolife™
- LifeGlobal/ GPS Dishes
- Nippon™
- Sparmed-Oosafe™

SCE IVF General Specifications

SEMI CLOSED ENVIRONMENT- IVF		
Overall Dimension (W x D x H)		785 x 702 x 647 mm (30.9 x 27.6 x 25.5")
Internal Dimension (W x D x H)		630 x 370 x 410 mm (24.8 x 14.6 x 16.1")
Power Supply		115 - 230VAC, 50/60 Hz
Power Consumption		250 Watts
Heating Elements		220 Watts
Incubator Specification	Gas Consumption for Incubators (GSI)	<2.0 Liters per hour
	Number of incubator compartments	2
	Temp Control Range	25 – 40°C
Work Area Specification	CO ₂ Control Range	2 – 9.9 %
	CO ₂ Input Gas Pressure	0.6 bar (8.7 psi)
	Temperature Control Range	25 – 40°C
	Worktop Material	Stainless Steel tabletop
Gas Recirculation		Yes
Built-in Microscope		1x, 5x and 20x. Manual motorized focus/zoom.
Alarms		Audible and visual alarm for out of range temperature, gas concentration and pressure
Net Weight		80 kg (176.4 lbs)
Shipping Weight		90 kg (198.4 lbs)
Shipping Dimension		850 x 1000 x 726 mm (33.5 x 39.4 x 28.6")

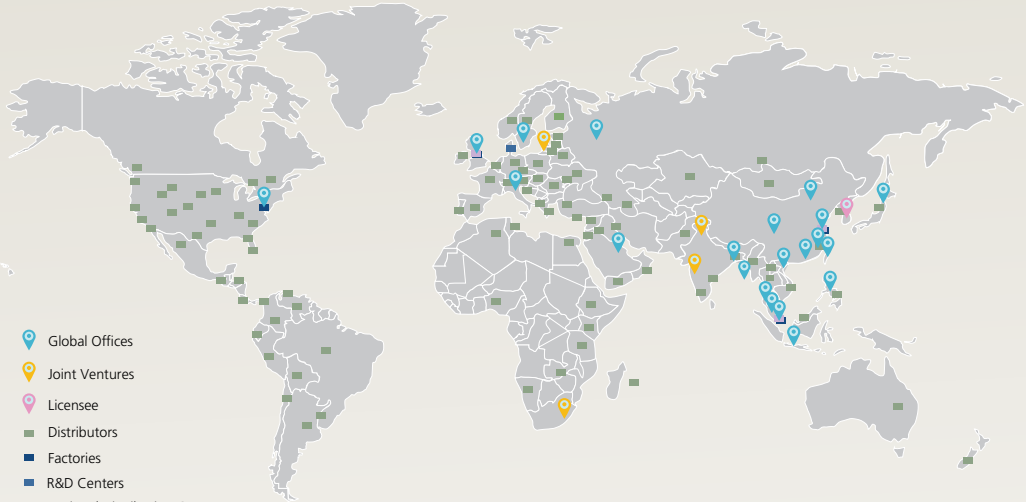
* Under normal condition (CO₂ set point reached at 5.0%, all lids closed)

** Under normal condition (O₂ set point reached at 5.0%, all lids closed)

Ordering Information

ITEM CODE	MODEL CODE	DESCRIPTION
Unit		
2070083	SCE-IVF-8	Semi Closed Environment for IVF, 230V 50/60Hz
2070082	SCE-IVF-9	Semi Closed Environment for IVF, 110V 50/60Hz

ESCO GLOBAL NETWORK



Esco Medical Products:

Anti-Vibration Table (AVT)
CO₂ Incubators
Culture and Fertilization Dishes
Fertilisafe® IVF Workstation
Mini® Benchtop Multi-room Incubators
Mini Mini® Humidified Benchtop Incubator
Mini® TL Time Lapse Embryo Incubators
Mini® GA (Gas and Temperature Validation Unit)
Mini® GA Mini (Gas Analyzer)
Semi Closed Environment (IVF/CSI)

Infertility is viewed as a problem that has social, psychological, and economic impacts to the afflicted individuals and couples. It is a global concern that knows no race nor creed. It has been estimated that 1 in 6 couples would struggle with infertility at least once in their lifetime.

The vision of Esco Medical is to support Assisted Reproductive Technologies (ART), such as IVF, by developing practical and state-of-the-art technological solutions for improving clinical success rates and patient satisfaction. All Esco Medical products are designed with the IVF clinic in mind and developed with the Silent Embryo Hypothesis as a guiding principle. The Silent Embryo Hypothesis states that the less disturbed an embryo can remain, the better its developmental potential will be.

It is on these foundations that Esco Medical remains committed to providing world class ART, worldwide. At Esco Medical, life has begun.



ESCO Life has begun
MEDICAL

21 Changi South Street 1 • Singapore 486 777

Tel +65 6542 0833 • Fax +65 6542 6920

csis-medical@escoglobal.com • www.medical.escoglobal.com

Esco Global Offices: Bangladesh | China | Denmark | Hong Kong | India | Indonesia | Italy | Japan | Lithuania | Malaysia | Philippines | Russia | Singapore | South Africa | South Korea | Taiwan | Thailand | UAE | UK | USA | Vietnam